

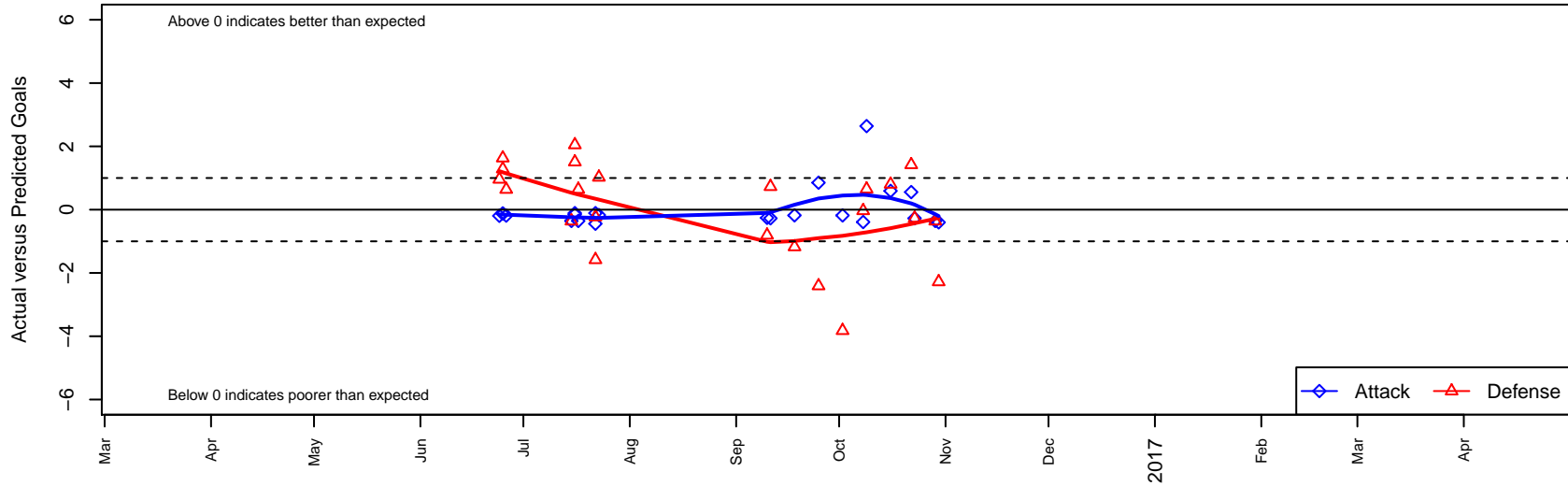
Westside Timbers Mundial TS G03

Westside Timbers
 Beaverton, OR
 G03 total strength=538
 attack=0.3 defense=0.54
 fall league = PTT G03 Div 2 White

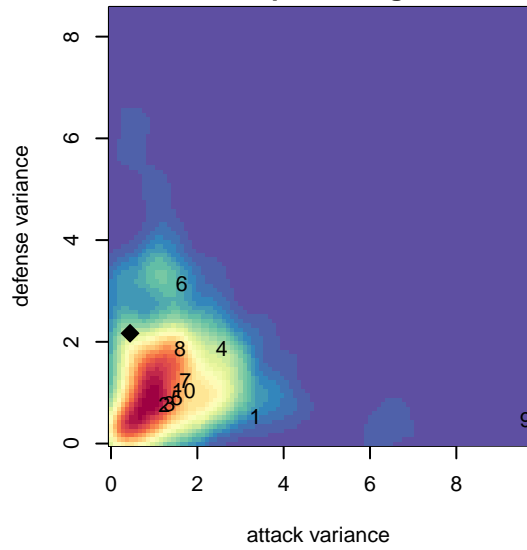
alt names used:
 Westside Timbers 03G Mundial TS
 Westside Timbers Mundial TS G03
 WESTSIDE TIMBERS WT G03 MUNDIAL TS (
 WT 03G Mundial TS

Venues played:
 2016 Capital Cup GU14
 2016 Beaverton Cup GU14 Silver
 2016 Oswego Nike Cup Bronze U14
 2016 PTT G03 Division 2 White

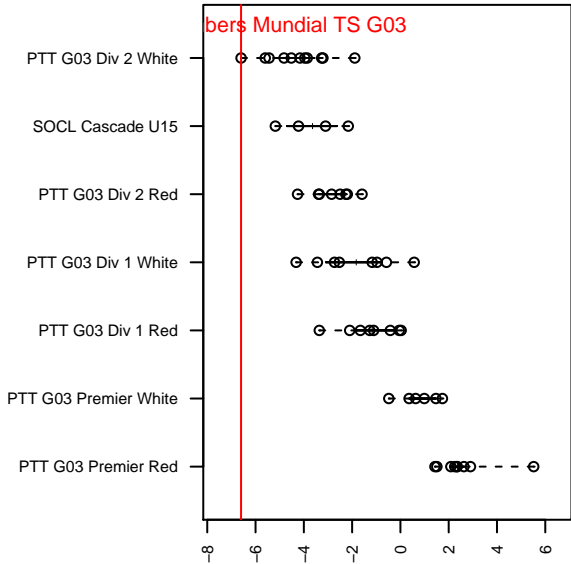
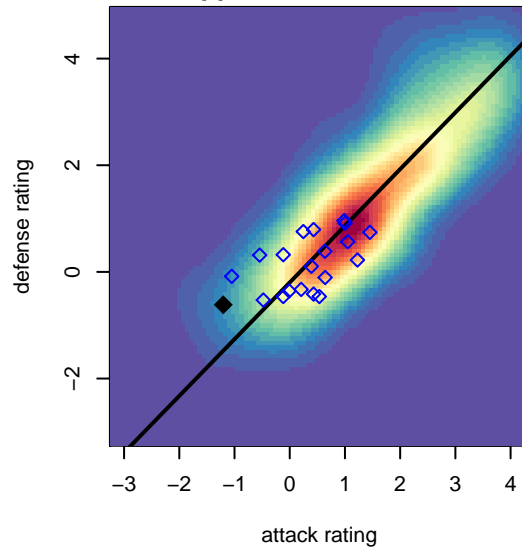
Westside Timbers Mundial TS G03
 Dots are actual minus expected GF (blue circles) and GA (red triangles).
 Blue line is smoothed change in attack strength. Red is smoothed change in defense strength.



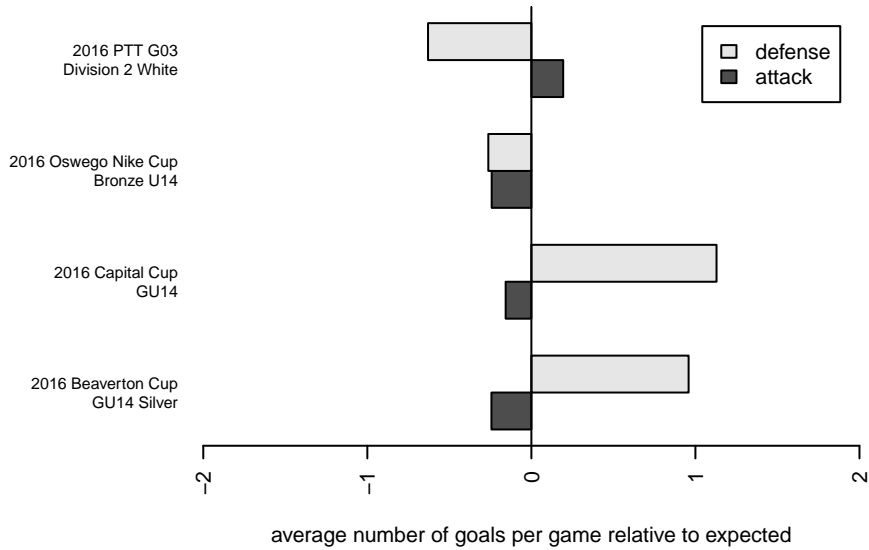
**attack and defense variance (black dot)
relative to other teams
and top 10 in region**



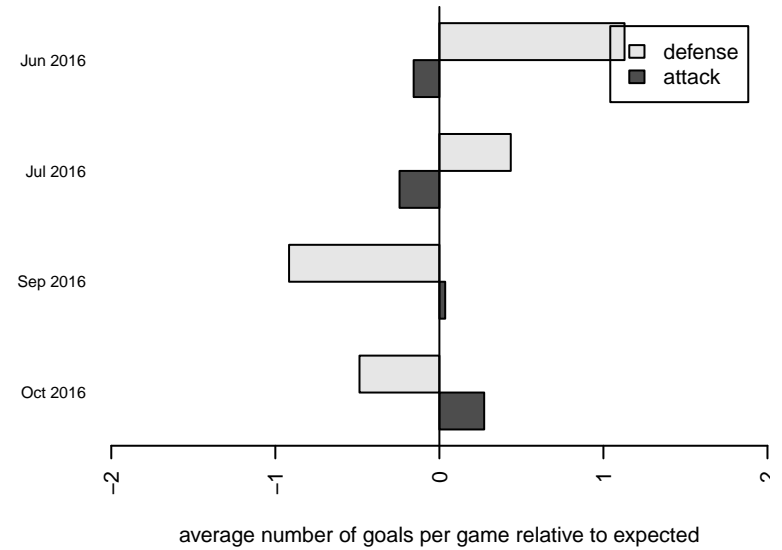
**attack and defense rating
relative to others at age
and all opponents in last 13 months**



Performance relative to 13 month average



Performance relative to 13 month average



| date | home | | away | | venue | pred.home | pred.away |
|-------------|---------------------------------|---|---------------------------------|----|---------------------------------|------------------|------------------|
| 2016-10-30 | FSC Roses White G03 | 4 | Westside Timbers Mundial TS G03 | 0 | 2016 PTT G03 Division 2 White | 1.72 | 0.40 |
| 2016-10-29 | HSC Revolution G03 | 2 | Westside Timbers Mundial TS G03 | 0 | 2016 PTT G03 Division 2 White | 1.64 | 0.36 |
| 2016-10-23 | Westside Timbers Mundial TS G03 | 0 | HSC Newberg G03 | 1 | 2016 PTT G03 Division 2 White | 0.27 | 0.73 |
| 2016-10-22 | NICH Impact G03 | 0 | Westside Timbers Mundial TS G03 | 1 | 2016 PTT G03 Division 2 White | 1.42 | 0.44 |
| 2016-10-16 | Westside Timbers Mundial TS G03 | 1 | McMinnville MYSA Sparks G03 | 2 | 2016 PTT G03 Division 2 White | 0.41 | 2.80 |
| 2016-10-09 | Westside Timbers Mundial TS G03 | 3 | Thelo Surge G03 | 1 | 2016 PTT G03 Division 2 White | 0.36 | 1.65 |
| 2016-10-08 | Westside Timbers Mundial TS G03 | 0 | Crossfire OR CUSC Black G03 | 3 | 2016 PTT G03 Division 2 White | 0.39 | 2.97 |
| 2016-10-02 | Westside Timbers Mundial TS G03 | 0 | Cascade Rush Blue G03 | 10 | 2016 PTT G03 Division 2 White | 0.18 | 6.18 |
| 2016-09-25 | Washington Timbers White 2 G03 | 7 | Westside Timbers Mundial TS G03 | 1 | 2016 PTT G03 Division 2 White | 4.59 | 0.15 |
| 2016-09-18 | Westside Timbers Mundial TS G03 | 0 | THUSC Cobalt G03 | 4 | 2016 PTT G03 Division 2 White | 0.18 | 2.82 |
| 2016-09-11 | HSC Newberg G03 | 0 | Westside Timbers Mundial TS G03 | 0 | 2016 PTT G03 Division 2 White | 0.73 | 0.27 |
| 2016-09-10 | Molalla YS Mayhem G03 | 4 | Westside Timbers Mundial TS G03 | 0 | 2016 PTT G03 Division 2 White | 3.19 | 0.26 |
| 2016-07-23 | THUSC Obsidian G03 | 2 | Westside Timbers Mundial TS G03 | 0 | 2016 Oswego Nike Cup Bronze U14 | 3.02 | 0.17 |
| 2016-07-22 | Crossfire OR LOSC White G03 | 3 | Westside Timbers Mundial TS G03 | 0 | 2016 Oswego Nike Cup Bronze U14 | 2.77 | 0.11 |
| 2016-07-22 | NICH Impact G03 | 3 | Westside Timbers Mundial TS G03 | 0 | 2016 Oswego Nike Cup Bronze U14 | 1.42 | 0.44 |
| 2016-07-17 | HSC Revolution G03 | 1 | Westside Timbers Mundial TS G03 | 0 | 2016 Beaverton Cup GU14 Silver | 1.64 | 0.36 |
| 2016-07-16 | Westside Timbers Mundial TS G03 | 0 | PCU Black 1 G03 | 0 | 2016 Beaverton Cup GU14 Silver | 0.15 | 2.05 |
| 2016-07-16 | Westside Timbers Mundial TS G03 | 0 | Oregon Trails FC Arsenal G03 | 3 | 2016 Beaverton Cup GU14 Silver | 0.11 | 4.51 |
| 2016-07-15 | HSC Revolution G03 | 2 | Westside Timbers Mundial TS G03 | 0 | 2016 Beaverton Cup GU14 Silver | 1.64 | 0.36 |
| 2016-06-26 | Westside Timbers Mundial TS G03 | 0 | Pelada FA Alianza G03 | 1 | 2016 Capital Cup GU14 | 0.19 | 1.64 |
| 2016-06-25 | Kidsport Irish United G03 | 6 | Westside Timbers Mundial TS G03 | 0 | 2016 Capital Cup GU14 | 7.28 | 0.13 |
| 2016-06-25 | CYSA Timber Barons Green G03 | 3 | Westside Timbers Mundial TS G03 | 0 | 2016 Capital Cup GU14 | 4.63 | 0.12 |
| 2016-06-24 | Westside Timbers Mundial TS G03 | 0 | Capital FC Timbers Black G03 | 0 | 2016 Capital Cup GU14 | 0.19 | 0.96 |